



NEWS RELEASE

December 15, 2023

FOR IMMEDIATE RELEASE

CONTACT:

Dean Sullivan, City Manager

citymanager@mineralwellstx.gov

RE: STAGE II (MODERATE) - DROUGHT WEEKLY UPDATE

STAGE II requires a 25% reduction in consumption.

CURRENT LAKE LEVEL:

WATER LEVEL

857.47

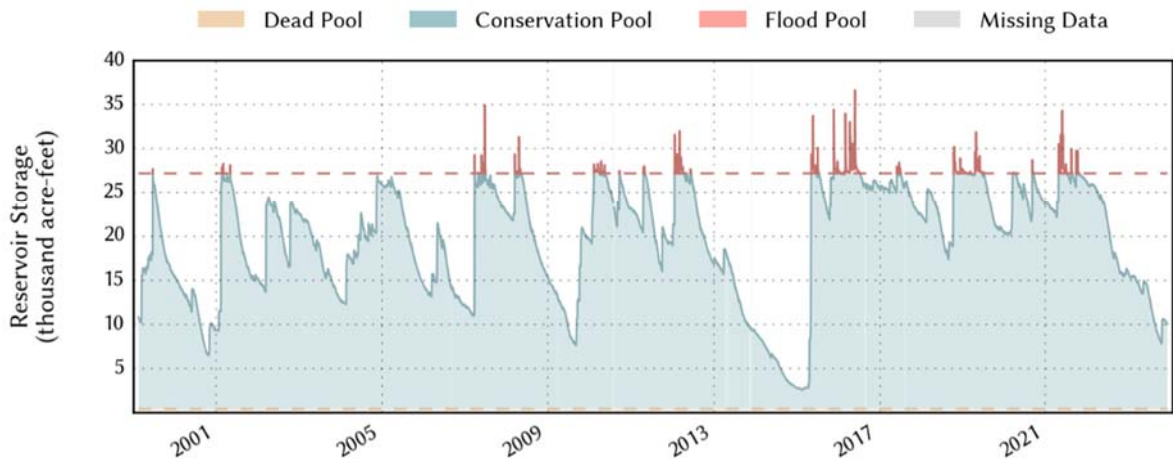
Feet MSL

Friday, December 15, 2023

at 6:15:00 AM

Level is **9.53 feet below** the conservation pool of 867.00 feet MSL

Lake Palo Pinto: 35.9% full as of 2023-12-14



Watershed area for Lake Palo Pinto is in a **MODERATE DROUGHT**

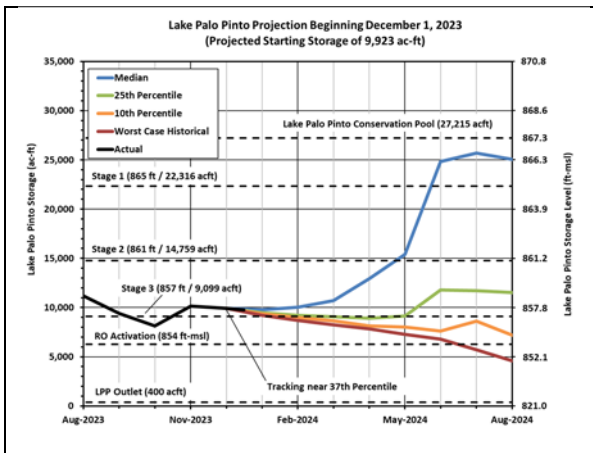
CONSUMPTION DEMAND: Consumption demand decreased 4% when compared to last week. HWTP production for the entire distribution system was 3.91 MGD for the week.

WEATHER FORECAST: A steady rain in the watershed is expected this Friday and ending early Saturday. Accumulation totals should average between ¼ to 1 inch in some locations. While most of the watershed remains under “Abnormally Dry” conditions, this rainfall will likely add run-off into Lake Palo Pinto and improve the lake level. Additional rain is also forecast for Thursday and Friday of next week.

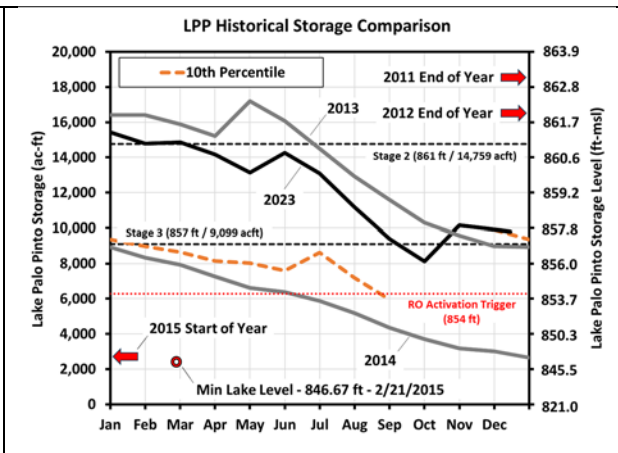
SITUATION REPORT: The lake level fell 0.12 feet for the week (0.02 ft/day). The release valve at Lake Palo Pinto has been reduced (7cfs) as the Brazos diversion pool level (-3 inches) and the Pre-Sed reservoir are near full pool again. One blending pump (1MGD) at the Brazos River continues to run. Drought conditions are unchanged and considered “Abnormally Dry” to “Moderate” within the watershed. Utility team reviews are underway along the proposed RO brine line discharge route. Permitting with the Texas Historical Commission’s Archeology Division has been submitted (2-to-4-week approval) and a Preservation Consultant identified. RO Equipment vendor is scheduled for an on-site visit mid- to late-January upcoming.

Reminder: Stage II restrictions require a 25% reduction in consumption.

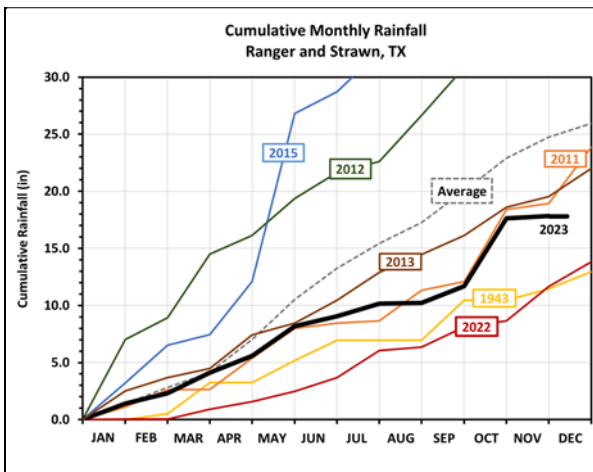
Lake Palo Pinto Projections



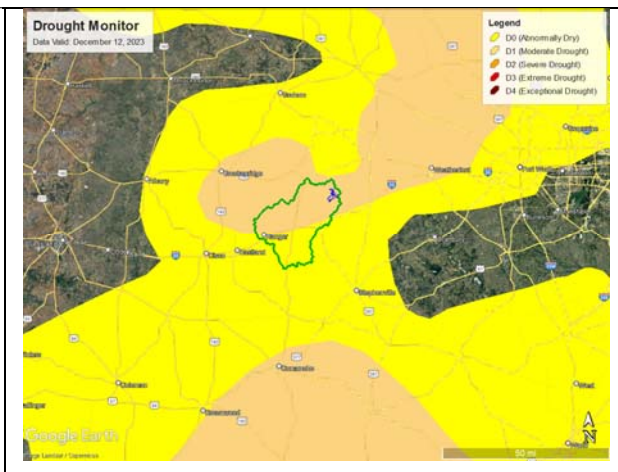
Current lake level for 2023 vs. 2013 level



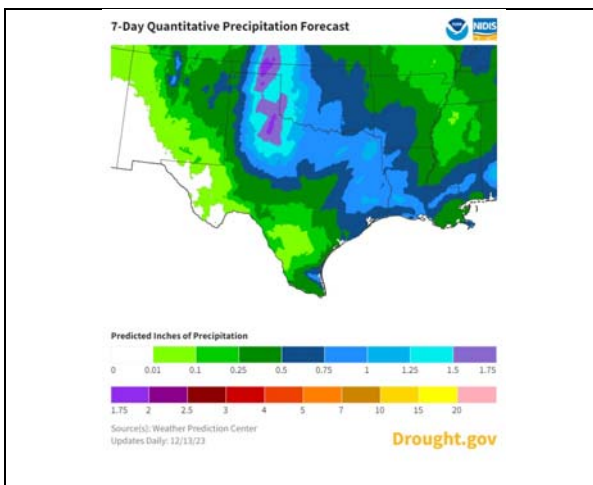
Cumulative Rainfall (watershed)



Drought Monitor (Lake Palo Pinto)



7-day Precipitation Forecast (Texas)



3 Month Seasonal Precipitation Outlook

